



FW752

## B&C Coolstar /women

Lightweight Ergonomic Full Zip Micro-fleece



### Composition

100% polyester anti-pilling micro-fleece (144 filaments)

### Size

XS, S, M, L, XL, 2XL

### Packing

5 pcs/pack & 15 pcs/carton

### Weight

170 g/m<sup>2</sup>

### Details

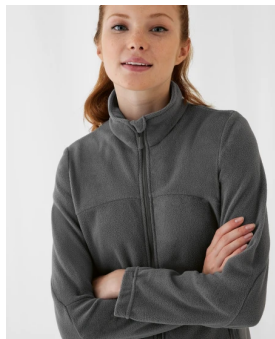
Warmth, comfort, and style are the three elements that make up the optimal active-outfit. Made of light, warm microfleece, B&C Coolstar /women ticks all the boxes: designed to adapt to the up-to-date urban lifestyle and to feel warm everywhere and in style.

The ergonomic body and sleeves shapes allow real freedom of movement. In terms of look, this full-zip fleece permits versatile coordination. You have plenty of styles options weather you go for the layered look, or wear them as a simple outer jacket.

For the perfect duo, pair it with the B&C Coolstar /men.

### Lightweight Ergonomic Full Zip Micro-fleece

- Featuring a supersoft thermally efficient fleece
- Wear this fleece as an outer or inner layer
- Flattering sleek cut
- Designed for ease of movement
- Ergonomic arm and elbow sleeve shape
- Full front reverse zip fastener with zip pull
- Chin protector
- 2 front pockets with zip and zip pull
- Set in sleeves
- Open hem and open cuffs



### Care instructions



All our products are tested and approved using all main print techniques.

### Colors

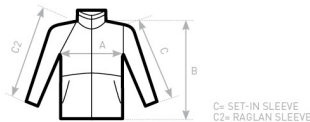
- 002 BLACK
- 003 NAVY
- 650 STEEL GREY



DUO  
CONCEPT

Want the same style for everyone?

Try the B&C Coolstar /men



C<sub>1</sub> = SET-IN SLEEVE  
C<sub>2</sub> = RAGLAN SLEEVE

B&C COOLSTAR /WOMEN FW 752	XS	S	M	L	XL	XXL	XXXL
A HALF CHEST	43,5	46,5	49,5	52,5	56,5	60,5	-
B BODY LENGTH	62,5	63	64	66	67	69,5	-
C SLEEVE LENGTH	61	62	63	64	65,5	67	-