

B&C BLACK TIE LSL /W. - - BK15



FITTED

- Stretch poplin
- Soft feminine collar
- Cross stitched mother-of-pearl effect buttons
- 2-button adjustable cuffs
 - a. Angular cuffs & thin-square-shaped gauntlets
 - b. Additional cufflink buttonholes
- Darts at bustline & back panel for a feminine shape
- Horizontal last buttonhole
- Curved bottom hem

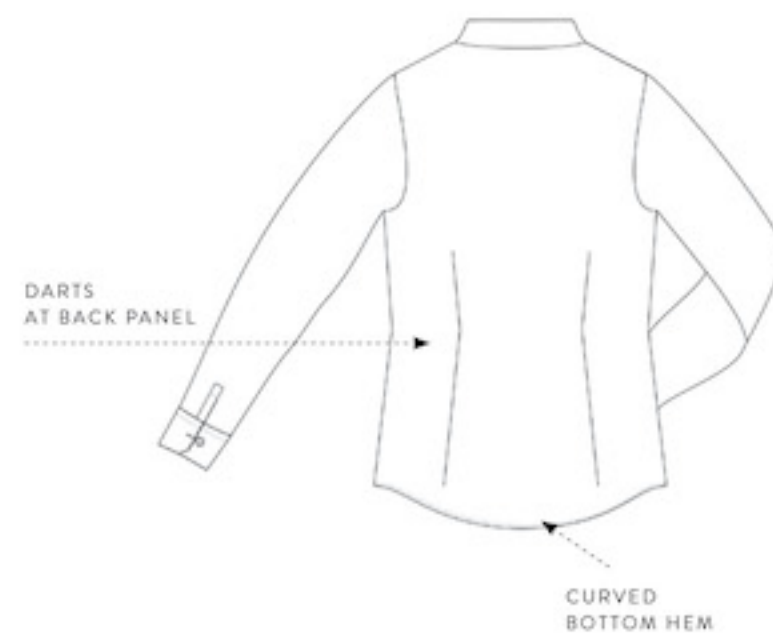
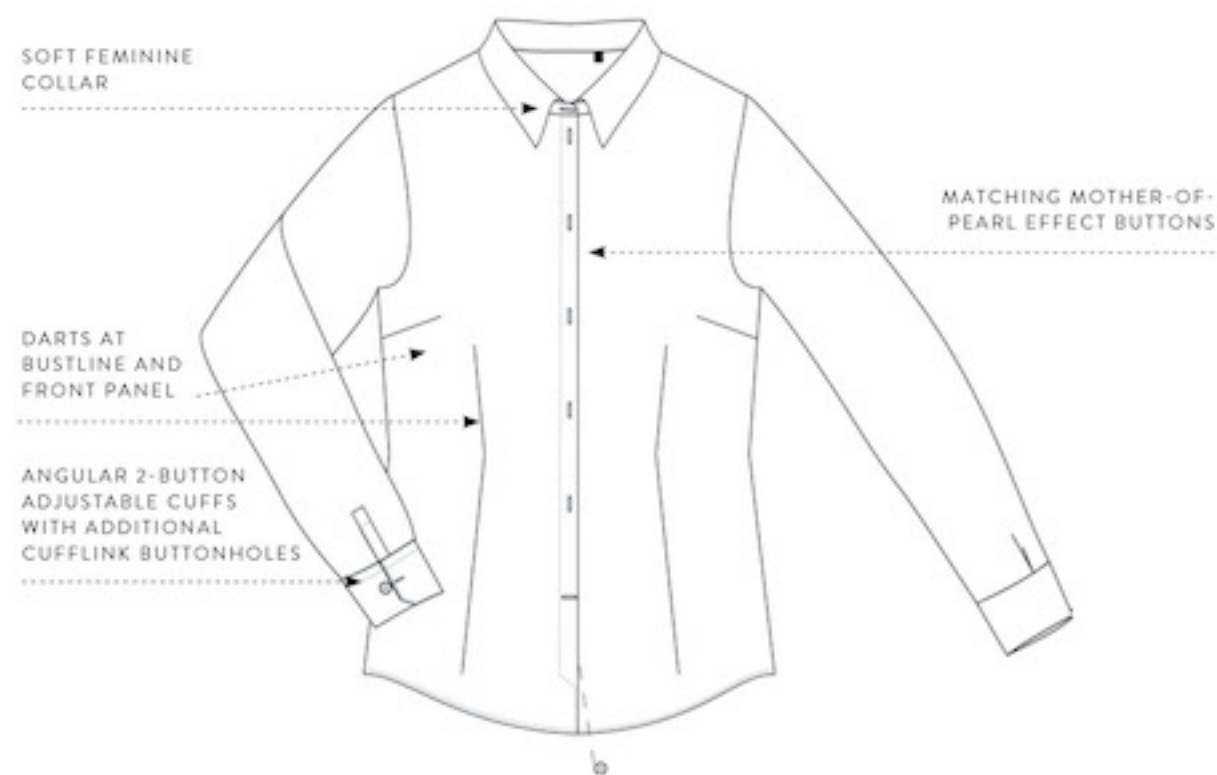


- 97% combed cotton - 3% elastane
- Poplin
- 135 g/m² **STRETCH**
- XS > 4XL
- 1 pc/pack & 10 pcs/carton



DUO CONCEPT
with B&C Black Tie LSL / men

STRETCH WOMEN'S LONG SLEEVED EASY CARE POPLIN SHIRT



SIZES [CM]

B&C BLACK TIE LSL /W. SW P23		XS	S	M	L	XL	2XL	3XL	4XL	5XL	6XL
A DRESS SIZE	FR	34	36	40	42	44	46	48	50	-	-
	IT	40	42	44	46	48	50	52	54	-	-
	EU	34	36	38	40	42	44	46	48	-	-
B CHEST SIZE	CM	88	92	96	102	108	114	118	122	-	-
	IN	35	36	38	40	42	45	47	48	-	-
C CENTER BACK LENGTH	CM	65	66	67	68	69	70	71	72	-	-
	IN	26	26	26	27	27	28	28	28	-	-

